

\$219,000 - 11421 84 Street Nw, Edmonton

MLS® #E4254175

\$219,000

3 Bedroom, 2.00 Bathroom, 765 sqft
Single Family on 0.09 Acres

Parkdale_EDMO, Edmonton, AB

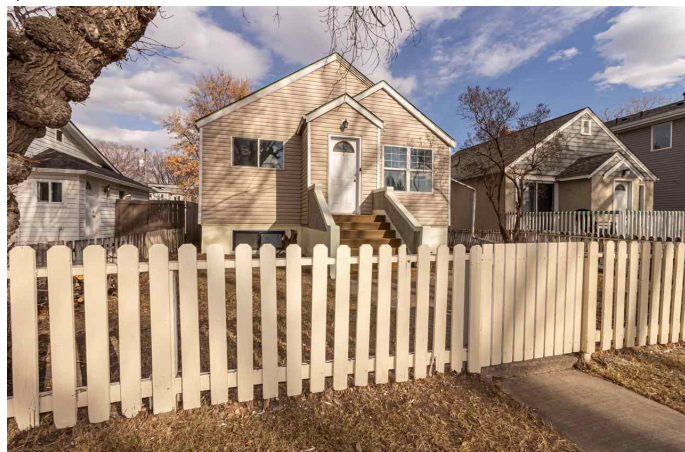
Excellent 1950 bungalow centrally located in the community of Parkdale for investors to generate rental income, or for the first time home buyer! This 765 sq. ft. bungalow has a front and rear separate entrance leading to a big deck in the backyard with a single detached garage. Live comfortable and cozy with 2 floors of living space at just over 1500 sqft: main floor has 2 bedrooms, living room, kitchen and a full bath. Basement features: a living room, 3 piece bath, laundry area, bedroom, and additional space with sink.

Location is close to all amenities, including: strip malls with grocery stores and restaurants, Commonwealth Stadium with fitness centre & swimming pool, & LRT and bus routes. Easy access to schools, parks, hospitals, downtown, Chinatown, Kingsway, Northlands, University of Alberta, NAIT and Grant Mac Ewan. This is a prime location! Don't miss this excellent opportunity to be a homeowner or an investor.

Built in 1950

Essential Information

| | |
|------------|-----------|
| MLS® # | E4254175 |
| Price | \$219,000 |
| Bedrooms | 3 |
| Bathrooms | 2.00 |
| Full Baths | 2 |



| | |
|----------------|------------------------------------|
| Square Footage | 765 |
| Acres | 0.09 |
| Year Built | 1950 |
| Type | Single Family |
| Sub-Type | Residential Detached Single Family |
| Style | Raised Bungalow |
| Status | ACTIVE |

Community Information

| | |
|-------------|--------------------|
| Address | 11421 84 Street Nw |
| Area | Edmonton |
| Subdivision | Parkdale_EDMO |
| City | Edmonton |
| County | ALBERTA |
| Province | AB |
| Postal Code | T5B 3B5 |

Amenities

| | |
|----------------|--|
| Features | Hot Water Natural Gas, No Animal Home, No Smoking Home |
| Parking Spaces | 3 |
| Parking | Single Garage Detached |
| # of Garages | 1 |

Interior

| | |
|-------------------|----------------------|
| Interior | Vinyl Plank |
| Interior Features | None |
| Heating | Forced Air-1 |
| # of Stories | 2 |
| Has Basement | Yes |
| Basement | Full, Fully Finished |

Exterior

| | |
|-------------------|---|
| Exterior | Vinyl |
| Exterior Features | Back Lane, Fenced, Flat Site, Golf Nearby, Landscaped, Level Land, Playground Nearby, Public Swimming Pool, Public Transportation, Schools, Shopping Nearby |
| Roof | Asphalt Shingles |
| Construction | Wood Frame |
| Foundation | Concrete |

School Information

| | |
|------------|----------------------|
| Elementary | DELTON SCHOOL |
| Middle | SPRUCE AVENUE SCHOOL |
| High | EASTGLEN SCHOOL |

Additional Information

| | |
|-------------|-----------------|
| Date Listed | July 13th, 2021 |
| Zoning | RF3 |

Data is deemed reliable but is not guaranteed accurate by the REALTORS® Association of Edmonton. Copyright 2021 by the REALTORS® Association of Edmonton. All rights reserved.